

POWERNAIL®

POWER PALM™
16 / 18 GA. Pneumatic Powernailer™



PALM001

OPERATION AND MAINTENANCE MANUAL
MANUAL DE OPERACION Y DE MANTENIMIENTO
MANUEL D'INSTRUCTIONS ET D'ENTRETIEN

WARNING

Read this manual before you use this Palm Nailer. Follow all safety warnings and instructions. If you are uncertain about the operation of the Palm Nailer, call us directly at 1-800-323-1653 for assistance or contact the closest Powernail Dealer for help. Please retain this information for future reference.

REV 2024.04.25

INTRODUCTION

This revolutionary tool allows you to blind nail starting rows, final rows and tight spaces. Virtually eliminate top nailing while maintaining integrity of the installation using the same cleat from start to finish.

INDEX

Index.....	2	PowerPalm Use.....	7
Warranty.....	2 & 12	Schematic / Parts List.....	8
Safety Instructions.....	3 & 4	Troubleshooting Chart.....	9
Safety Labels.....	4	Phone Support.....	9
Air Supply / Maintenance.....	5	Cleat Depth Chart.....	10
Operating the tool.....	6	Featured Products.....	11
PowerPalm Nailing Tips.....	6	Web Site.....	12
Starter Rows (pic).....	6	Powernail Company Info.....	12
Finishing Rows (pic).....	7		

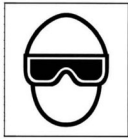
LIMITED WARRANTY

POWERNAIL® Company, Inc. warrants to its customer, and to the first end-use purchaser of POWERNAIL POWERPALM from an authorized POWERNAIL distributor, that each serialized manufactured POWERPALM by POWERNAIL®, for a period of 12 months from the date of purchase. POWERPALM shall be free of defects in materials and workmanship and will meet POWERNAIL's specifications in effect at the time of Product shipment. POWERNAIL will repair or replace, at its option, any Powernailer® that does not conform to this warranty. Claims must be made no later than fifteen (15) days after the end of the warranty period. POWERNAIL will perform all repair or replacements itself or through its authorized contractors. POWERNAIL is not responsible for shipping, labor or other direct or indirect costs. Damage caused by abuse, misuse, unusual or excessive wear is excluded. Repair or modification of the Products by unauthorized parties will void this warranty. The customer is responsible for returning Products to POWERNAIL for verification of nonconformance. Warranties for Products not manufactured by POWERNAIL are limited to warranties provided to POWERNAIL by the manufacturer of such product that are assignable to customer.

THESE WARRANTIES AND REMEDIES ARE EXCLUSIVE OF ALL OTHERS, EXPRESS OR IMPLIED. THE WARRANTIES OF MERCHANTABILITY AND FITNESS FOR PURPOSE ARE EXPRESSLY EXCLUDED. IN NO EVENT SHALL POWERNAIL'S LIABILITY FOR A WARRANTY CLAIM EXCEED THE PRICE PAID TO POWERNAIL FOR THE NONCONFORMING PRODUCT, REGARDLESS OF THE FORM OR BASIS OF THE CLAIM OR CAUSE OF ACTION.

Please see the back of this manual for warranty registration instructions.

SAFETY INSTRUCTIONS



Always use approved **SAFETY GLASSES** and **EAR PROTECTION** when operating this Nailer. The operator and others in the work area should always wear approved **FRONT** and **SIDE** eye protection when operating this Nailer. Eye protection will help guard against flying nails and debris, which could cause severe eye injury.



EYE AND EAR PROTECTION should be used to prevent hearing damage when there are high noise levels in the work area.

ALWAYS use ear plugs with a noise reduction rated at 29 db or higher at a construction site.

Nailer noise ratings are at LPA-1sd=90.6,
LWA-1sd=99.3 and LPA-1s,1m=86.3.
Nailer vibration rating: $m/s^2=3.05$.

Always **DISCONNECT THE AIR SUPPLY** before making any adjustments, repairing, clearing jams or when the Nailer is not in use. Do not use on scaffolding or ladders and disconnect nailer from air supply when transporting between installation areas.

Never attach the female end of a quick disconnect to the Nailer. This will trap air inside the Nailer and permit it to be discharged. Only the unrestricted male connection should be attached to the Nailer.

Nailer requires an air source that can continuously deliver 70 to 110 psi at 3-1/2 cubic feet of air per minute for operation.

Normal air pressure should not exceed 110 psi or damage to the Nailer and seals may occur. Excess air pressure can cause the Nailer to explode.

To prevent fire or explosion, use only regulated compressed air—do not use bottled gases of any kind (no oxygen or combustible gasses) to power this Nailer.

Nailer is intended for use installing wood flooring and is not to be used for purposes not specified in the operations manual.

Do not use any nails other than Powernail Powercleats Nails which are specifically designed for use in any Powernailer. Powercleats Nails are available in various lengths. Contact your Powernail Dealer for Powercleats Nails.

Use only Powernail replacement parts in the repair or maintenance of this nailer.



Parts or repair services are available from the manufacturer or from agents authorised by the manufacturer. Repairs should be carried out only by trained service personnel in the field of fastener driving tools who will observe proper safety controls while performing maintenance. Service personnel should be qualified to assess the safe working condition of fastener driving tools.

Never place any part of the body in the discharge path of the Nailer when air is connected to the Nailer. Always make sure Nailer is empty of cleats before connecting air hose so as to prevent any accidental discharge from occurring.

Never leave the Nailer unattended while it is connected to an air supply.

Whenever air is connected to the Nailer, keep body parts away from the nail discharge path. Disconnect the air line before making adjustments or repairs on the Nailer. Only connect air to an unloaded Nailer so as to prevent accidental discharge.

WARNING

SAFETY WARNINGS & CAUTIONS

Read and understand all safety instructions and tool labels before operating.



- Always wear safety glasses with side shields that meet ANSI Z87.1 requirements when operating the tool. Make sure all others in work area wear safety glasses.
- Always wear hearing protection to protect your hearing from noise. Prolonged exposure to loud noise can result in hearing loss.
- **TO LOAD:** Point tool in a safe direction, lightly place one nail in the guide bushing tip. A magnet in the bushing will hold the nail. **DO NOT PUSH THE NAIL.** Pushing the nail too deep into the tip can result in activating the tool.
- Only connect air to an unloaded tool to avoid accidental discharge and always keep tool pointed in a safe direction.
- Never point tool at yourself or others in the work area. Always keep tool pointed in a safe direction at all times.

- Use only clean, dry, regulated air, not to exceed 110 psi.
- Never use oxygen or other bottled gasses—explosion may occur.
- Always **DISCONNECT THE AIR SUPPLY** before making any adjustments, repairing, clearing jams or when the nailer is not in use. Do not use on scaffolding or ladders. Disconnect Nailer from air supply when transporting between installation areas.
- Never attach the female end of a quick disconnect to the Nailer. This will trap air inside the Nailer and permit it to be discharged. Only the unrestricted male connection should be attached to the Nailer.
- Nailer requires an air source that can continuously deliver 70 to 110 psi at 3-1/2 cubic feet of air per minute for operation. Normal air pressure should not exceed 110 psi or damage to the Nailer and seals may occur. Excessive air pressure can cause the Nailer to explode.
- Keep hands and body parts away from area being fastened. Fasteners can deflect and turn as they are being driven into the work piece, and penetrate fingers, hands, and other body parts that may be in the fastening area.
- Do not fire into hard or hazardous materials. Do not attempt to discharge tool into hard or brittle material.
- Do not modify the tool. Modifications can cause tool to be unsafe and can cause the tool to operate improperly.
- Keep tool out of reach of children.
- Never leave a pressurized tool unattended. A pressurized tool could be picked up or handled by someone who is unfamiliar with the tool or has not read the manual.
- Don't wear loose clothing or jewelry. They can get caught in moving parts. Also wear protective hair covering to prevent long hair from getting caught in the tool.
- Keep Work Area Clean. Cluttered areas can invite injuries. Be aware of air hoses and other tripping hazards.

Warning! See manual for use and safety. Always keep tool pointed in a safe direction. Operators and others in work area must wear EYE and EAR protection. Use air only at 70-110 psi.

(Nailer Safety Label)

WARNING



Read and understand all safety instructions and tool labels before operating.

1. Never point tool at yourself or others in the work area.
2. Operators and others in work area **MUST** wear EYE and EAR protection. Use safety glasses with side shields.
3. To avoid accidental discharge, attach air hose first before loading nails in the tip.
4. When loading, point tool in a safe direction while lightly placing one nail in the guide bushing tip. A magnet in the bushing will hold the nail. Pushing the nail too deep into the tip can result in activating the tool.
5. Only connect air to an unloaded tool and always keep tool pointed in a safe direction.
6. Disconnect air when clearing jams, servicing, or when tool is not in use.
7. Use only clean, dry, regulated air, not to exceed 110 psi.
8. Never use oxygen or other bottled gasses—explosion may occur.



WARNING: This product can expose you to chemicals including Carbon Black, which is known to the State of California to cause cancer. For more information go to www.P65Warnings.ca.gov.

AIR SUPPLY & MAINTENANCE

Your PowerPalm is fully assembled when you receive it. Before using it, attach the air line and desired air system accessories such as air filters and/or oilers. Be sure the air hose is depressurized when installing or removing adapters to the air line.

Please refer to the Parts List for part names and item numbers.

CONNECTING THE TOOL TO AN AIR SUPPLY

1. Place two drops of oil in the AIR PLUG if needed. If you are using an automatic in-line oiler, check and add oil if necessary.
2. Turn the compressor on and set the regulator to an operating pressure between 70-110 psi
3. Connect the tool to the air supply (see Setup for air supply connection recommendations).

REGULAR MAINTENANCE

1. Frequent, but not excessive, lubrication is required for best performance. Oil added through the airline connection will lubricate internal parts. An automatic air-line oiler is recommended but oil may be added manually before every operation or after about 1 hour of continuous use.

Only a few drops of oil at a time are necessary. Too much oil will collect inside the tool and be blown out during the exhaust cycle. **ONLY USE PNEUMATIC TOOL OIL.** Do not use detergent oil or additives, as these lubricants will cause accelerated wear to the seal in the tool.

2. Dirt and water in the air supply are major causes of pneumatic tool wear. Use a filter/oiler for better performance and longer life. The filter must have adequate flow capacity for the specific application. Consult the filter/oiler manufacturer's instructions for proper maintenance of your filter.
3. Keep tools clean for better and safer performance. Use nonflammable cleaning solutions only if necessary. **CAUTION:** Soaking the tool may damage O-ring and other tool parts.

OPERATING THE TOOL

Your PowerPalm™ Nailer is an Automatic Hammer.

It has no trigger—it starts driving when the piston rod assembly presses against the fastener's head.

It will automatically stop when the fastener's head no longer touches this piston rod.

The operator should apply a slight amount of pressure to activate the tool. Do not force the tool.

PowerPalm Nailer Tool-Tips

- 1) Lightly place one nail in the guide bushing
- 2) Do not push harder than necessary to activate nailer
- 3) Nailer will drive & set nail with minimal pressure



Use the PowerPalm nailer to nail down your starter rows. Be sure to leave the recommended expansion space between the wall and your starter rows. Use the PowerPalm for 2-3 rows or until you are far enough from the wall to start using a Powernailer®.

POWERPALM USE

1. Connect the tool to the air supply. Make sure the air pressure is in correct range for the tool (70-110 psi).
2. Point tool in a safe direction, lightly place one nail in the guide bushing tip. A magnet in the bushing will hold the nail. **DO NOT PUSH THE NAIL.** Pushing the nail too deep into the tip can result in activating the tool.
3. Gently push the PowerPalm nailer against the fastener's head. The tool will automatically start driving and stop when the fastener is countersunk. Please note the PowerPalm nailer will countersink the fastener's head into the nail pocket.
4. Lift the tool off the work surface immediately after the fastener has been driven in.
5. Upon completion of your job, disconnect the PowerPalm from the air supply.

Test the driving depth in a sample piece of wood before using. If the fastener is being driven too far or not far enough, adjust the regulator to provide less air pressure or more air pressure.

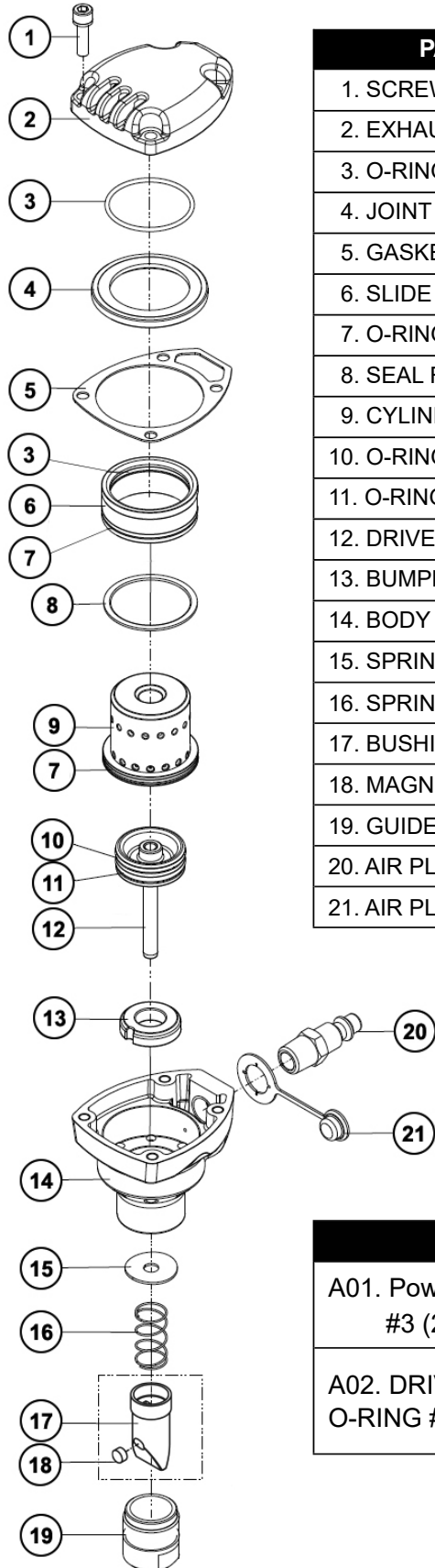
LEAKING AIR: The PowerPalm nailer may release air pressure if accidentally dropped. The internal cycling mechanism may assume a mid-cycle position allowing air to pass through without energizing the oscillating action. The unit will remain inoperative when this occurs. To stop the escaping air, tap the cap side of the unit into the palm of your hand with enough impact to reset the internal piston. The escaping air should immediately stop and your unit is ready for use.



Use the PowerPalm nailer on the last couple of finishing rows, starter rows, end-strips or

POWERPALM SCHEMATIC VIEW

PARTS LIST



PART NAME	SOLD IN KIT OR ASSY.	PART NO.
1. SCREW		N/A
2. EXHAUST COVER		N/A
3. O-RING 34.65 X 1.78 (x2)	(In Palm Seal-Kit)	09-30003103
4. JOINT GUIDER		N/A
5. GASKET		09-30003105
6. SLIDE COVER		N/A
7. O-RING 37 X 1.78 (x2)	(In Palm Seal-Kit)	09-30003107
8. SEAL RING	(In Palm Seal-Kit)	09-30003108
9. CYLINDER		N/A
10. O-RING 26.7 X 1.78	(In Palm Seal-Kit, A02)	09-30003110
11. O-RING 25 X 2.4	(In Palm Seal-Kit, A02)	09-30003111
12. DRIVE BLADE ASSEMBLY	Sold as an assembly	09-30003112A
13. BUMPER		09-30003113
14. BODY		N/A
15. SPRING WASHER		09-30003115
16. SPRING		09-30003116
17. BUSHING (WITH MAGNET)	Sold as a set	09-30003019A
18. MAGNET	Not sold separately, See #17	N/A
19. GUIDE BUSHING		N/A
20. AIR PLUG (NPT 1/4"-18)		N/A
21. AIR PLUG CAP		N/A

KITS & ASSEMBLIES

A01. Power Palm SEAL KIT: #3 (2 each), #7 (2 each), #8, #10, #11	09-PALMKIT2
A02. DRIVE BLADE ASSEMBLY: INCLUDES: O-RING #10, O-RING #11, PISTON / DRIVE BLADE	09-30003112A

TROUBLESHOOTING

Troubleshooting and repairs should be carried out only by trained service personnel in the field of fastener driving tools who will observe proper safety controls while performing maintenance. Service personnel should be qualified and able to determine the safe working condition of fastener driving tools.

	PROBLEM	POSSIBLE CAUSE	SOLUTION
1	Air leaking between exhaust cover and body	1. Screw loose.	Tighten screws (Part #1)
		2. Damaged seal.	Check and replace seal (Part #3)
2	Air leaking in area of airplug	1. Air plug loose	Tighten air plug (Part #20)
		2. Thread of air plug is not matched to female screw of body.	Check and replace air plug (Part #20)
3	Air leaking in area of top and/or bottom of body	1. Worn O-ring in cylinder/body/side/sleeve/piston assembly.	Replace O-ring (Part #09-PALMKIT2)
4	Tool does not perform properly in excessive cold.	1. Seals and lubricant are not up to operating temperature	Warm tool up so lubricant and seals will allow to function correctly.

For Step-by-Step Videos and Instructions,
Visit our Web Site at: www.Powernail.com

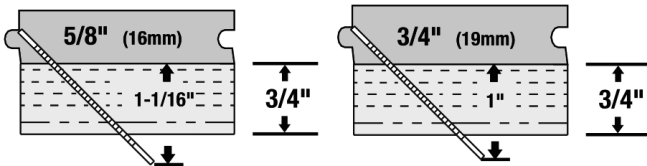
**Free technical support, contact
Powernail at 800-323-1653 or 262-292-5300**

POWERCLEATS LENGTH DETERMINATION CHART

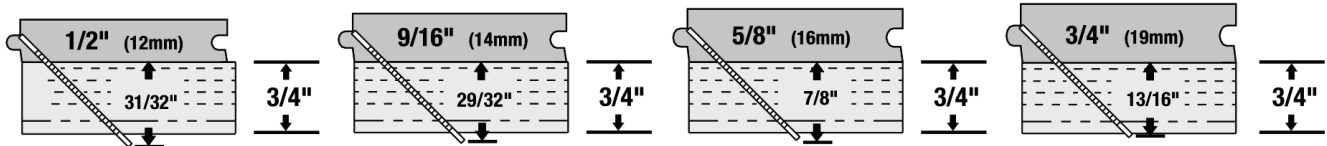
This chart will assist you in determining the proper length of Powercleats to use for various thicknesses of flooring. Approximate vertical penetration of the Powercleat under the hardwood floor is shown for each application. This is only a guide. Results should be tested in the field before proceeding.

Nail Penetration for 3/4" and 5/8" Underlayment

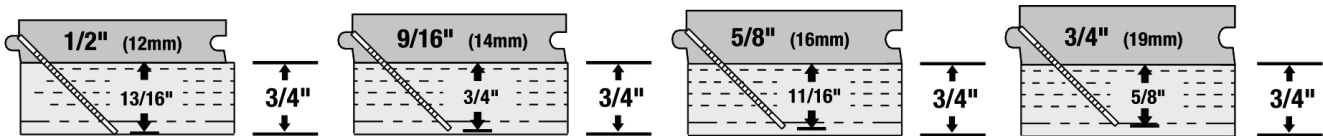
2" PowerCleats (16 Gauge) or 2" PowerStaples (15.5 Gauge)



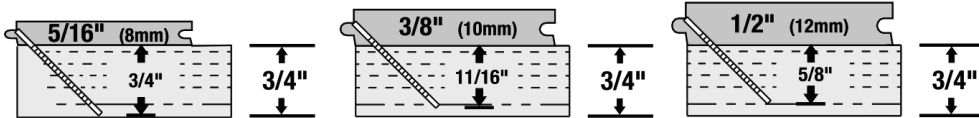
1-3/4" PowerCleats (16 or 18 Gauge) or 1-3/4" PowerStaples (15.5 Gauge)



1-1/2" PowerCleats (16 or 18 Gauge) or 1-1/2" PowerStaples (15.5 or 18 Gauge)



1-1/4" PowerCleats (20 Gauge) or 1-1/4" PowerStaples (18 or 20 Gauge)



This chart demonstrates approximate depth of fasteners. Actual depths may vary based upon tongue profile / milling of the wood. It is recommended to consult with the wood manufacturer on suggested fastener lengths before installation.

Featured Products

Powerjack® Model 500

Truly a Tinker's TOOL, the POWERJACK Model 500 is designed to push or pull flooring strips into place and hold them tightly. The PowerJack Model 500 self adjusts from 5/16" to 3/4" thickness flooring. It can be used to either push or pull wood flooring strips into place and ratchets tightly for hands free operation. The base of the PowerJack 500 has mounting holes for mid-floor use. Simply screw nail the PowerJack 500 to your sub floor -in front of your flooring strips -and ratchet the flooring strips tight. Also great for under cabinet and kick plate installation.

Part #: PJ500



16-GAUGE POWERCLEATS®

16 GA. Powercleats® are designed for the hardwood flooring industry and are FHA and VA approved. Powercleats® nails are made from high-quality steel with a well-formed set of barbs along each nail, providing the ultimate holding power. Designed to ensure trouble-free nailer operation and optimum construction results.

1 1/2" 5 Pack

(5 x 1,000 Cleats)

Part #: L150165

1 3/4" 5 Pack

(5 x 1,000 Cleats)

Part #: L175165

2" 5 Pack

(5 x 1,000 Cleats)

Part #: L200165



18-GAUGE POWERCLEATS®

18 GA. Powercleats® are designed for the hardwood flooring industry and are FHA and VA approved. Powercleats® nails are made from high-quality steel with a well-formed set of barbs along each nail, providing the ultimate holding power. The innovative L-shaped head helps to eliminate split tongues.

1 1/4" 5 Pack

(5 x 1,000 Cleats)

Part #: L125185

1 1/2" 5 Pack

(5 x 1,000 Cleats)

Part #: L150185

1 3/4" 5 Pack

(5 x 1,000 Cleats)

Part #: L175185



HD HEAD™
CLEAT TECHNOLOGY

Visit www.Powernail.com

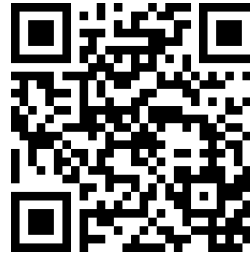
- Dealer Locator
- Rental Locator
- Parts Store
- Product Information
- Repair Tech Videos
- Cool Tools Cleat Calculator
- Cleat Depth Chart
- Training Schools

POWERNAIL® Warranty Registration

Register your warranty on the web and you will automatically be entered to win a **FREE!!! PowerPalm™**.



Scan this code with your phone
to be taken to our warranty
registration form



Register at <https://www.powernail.com/warranty-registration/>

POWERNAIL COMPANY, INC.
1020 Williams Road, Genoa City, WI 53128
US Phone: 1-800-323-1653 or 262-292-5300
www.powernail.com